

Bella Strada  
**BRONSON**



**Elevation A**

**Available elevations:**



**Elevation A - Spanish**



**Elevation B - Italian**



**Elevation C - Craftsman**

**Approx. square feet:** 2,550

**Stories:** 2

**Bedrooms:** 4

**Garage:** 2-car

**Plan Number:** N26B

On the main floor of the thoughtful Bronson plan, you'll find a spacious great room and an open dining room that flows into a well-appointed kitchen with a center island and optional gourmet features. You'll also appreciate a quiet study and a convenient guest suite with an expansive walk-in closet and attached bath. Upstairs, enjoy a relaxing loft and three bedrooms, including a master suite with optional deluxe master bath. Additional personalization options include a gourmet kitchen or covered patio.

**COMMUNITY LOCATION**

9601 Philta Way  
Elk Grove, CA 95757  
916-512-2003

**HOME GALLERY**

One Harbor Center Suite 150  
Suisun City, CA 94585  
800-852-9714



**COMMUNITY LOCATION**

9601 Philta Way  
Elk Grove, CA 95757  
916-512-2003

**HOME GALLERY**

One Harbor Center Suite 150  
Suisun City, CA 94585  
800-852-9714

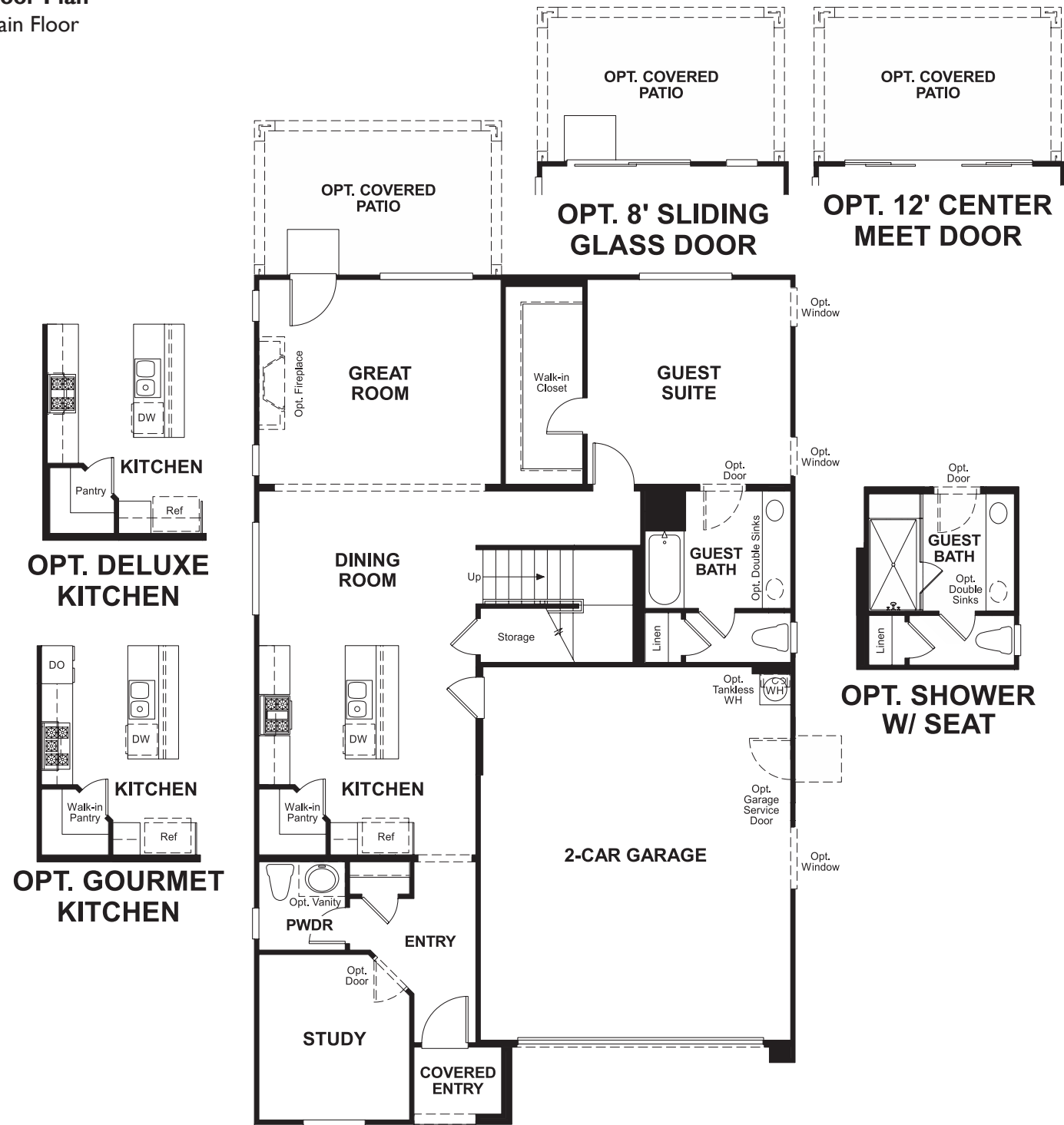


Bella Strada  
**BRONSON**

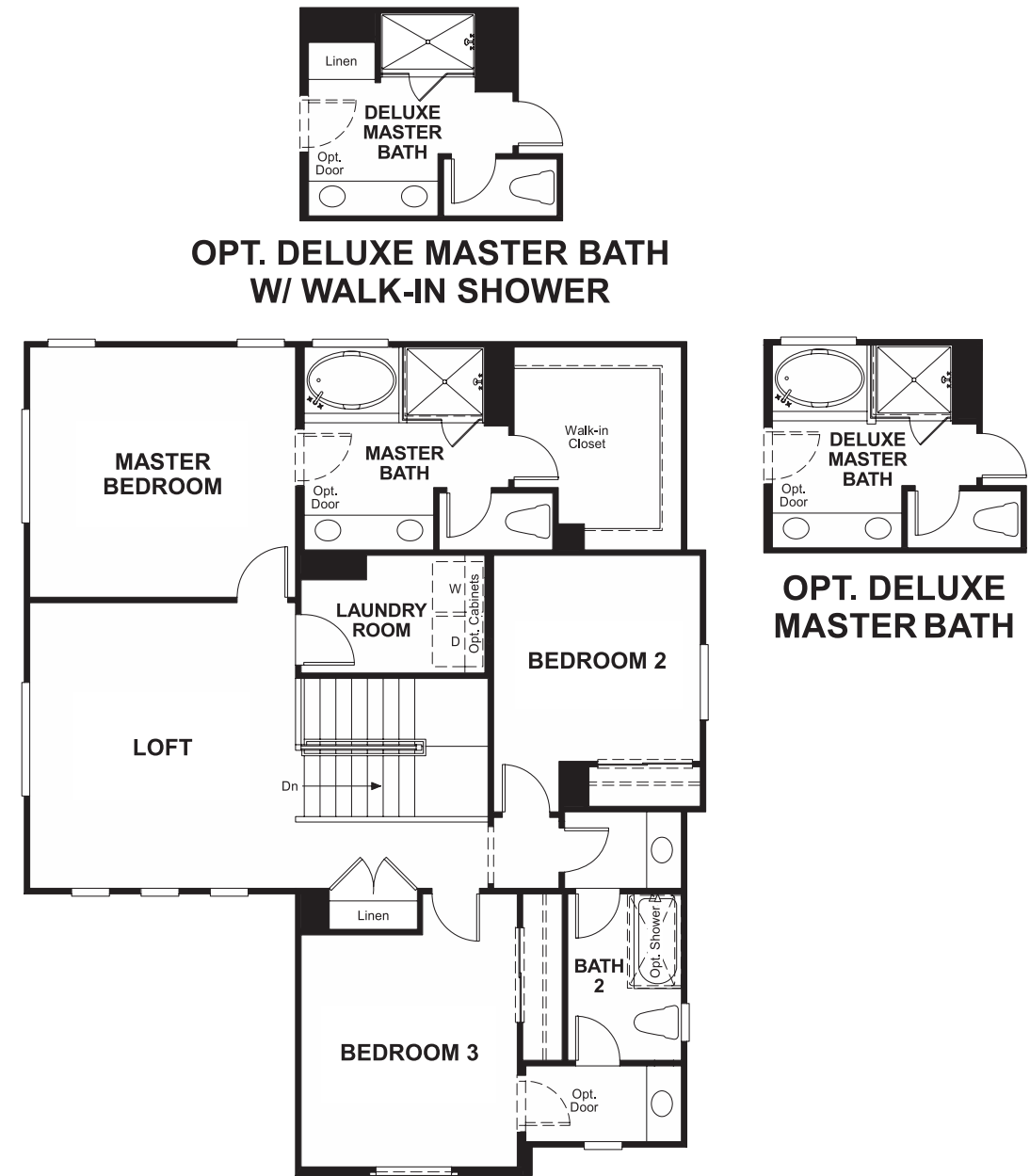
Approx. square feet: 2,550  
Stories: 2  
Bedrooms: 4

Garage: 2-car  
Plan Number: N26B

**Floor Plan**  
Main Floor



**Floor Plan**  
Second Floor



**THIS PLAN'S PROJECTED  
HERS® INDEX = 69\***  
Projected Rating Based on Plans – Field Confirmation Required

**How does this floor plan rate?**  
Take a look: **100** = Standard new home\* **130** = Typical resale home\*\*  
The lower the number, the better! Refer to the RESNET® HERS index brochure or go to [www.RESNET.us](http://www.RESNET.us) for details.

**What's a HERS® Index?** HERS stands for Home Energy Rating System, a system created by RESNET® to measure home energy efficiency. A Projected HERS index or rating is a computer simulation performed prior to construction by a third-party HERS rater using RESNET-accredited rating software, rated feature and specification data derived from home plans, features and specifications, and other data selected or assumed by the rater. The projected HERS index is approximate and is subject to change without notice. Actual results will vary.

\*This information is presented for education purposes only. The HERS index for a confirmed rating will be determined by a third-party HERS rater based on data gathered from on-site observations and, if required, testing of rated features for a home as featured, optioned, located, oriented and/or built.  
+Standard new home is based on the RESNET® Reference Home definition with a HERS® index of 100 (based on the 2006 International Energy Conservation Code).  
++Typical resale home is based on the U.S. Department of Energy definition with a HERS® index of 130.

^RESNET® has developed the HERS® index to indicate the comparative efficiencies of homes. It is no guarantee that energy efficiencies will be achieved.